



LEVITTOWN PUBLIC SCHOOLS

Innovating with Purpose

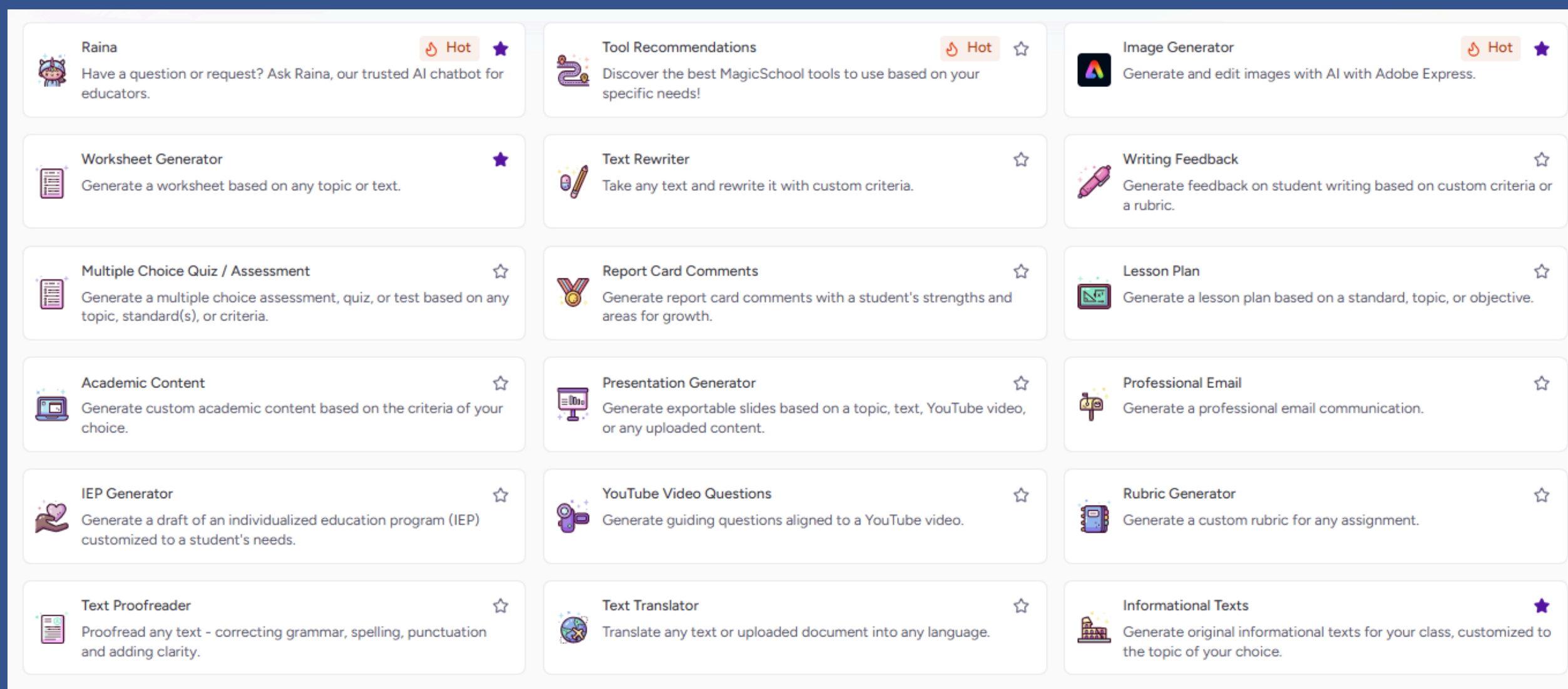


What is
MagicSchool
AI?

Created by Educators for Educators



MagicSchool AI is an education-designed platform that empowers teachers to personalize learning, streamline instruction, and support every student in a safe and responsible way.





Our
District
Plan

Phase 1: 2024-2025

01

Pilot different AI platforms to find the best fit for our district.

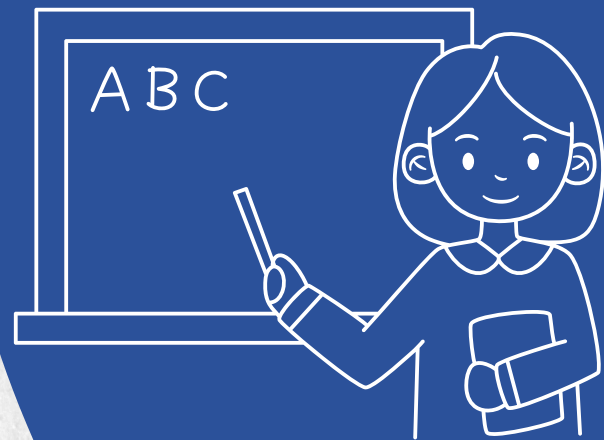


2024-2027 District Plan

Phase 2: 2025-2026

02

Introduce MagicSchool to teachers and staff, providing opportunities to become familiar with the platform and experiment with MagicSchool tools.



Phase 3: 2026-2027

03

Introduce MagicSchool to students, providing opportunities to become familiar with the platform and experiment with MagicSchool tools.





*Impact on
Teachers &
Students*

How Can MagicSchool AI Help Teachers?

CREATE INSTRUCTIONAL MATERIALS

Build custom lesson plans, rubrics, and assessments matching learning objectives.



RUBRIC GENERATOR

1

DIFFERENTIATE FOR SUCCESS

Adjust texts and materials to meet students' instructional needs.



TEXT LEVELER

2

ENGAGE FAMILIES & COMMUNITIES

Generate emails and newsletters to communicate with students' families.



CLASS NEWSLETTER

3

GENERATE ORIGINAL CONTENT

Create engaging, relevant, and personalized content for your students.



ACADEMIC CONTENT CREATOR

4

Why Are We Introducing Students to AI?

1

It is our collective responsibility to safely and responsibly prepare students for the world of AI.

2

Introducing students to AI is essential to build critical future-ready skills, such as AI literacy, ethical reasoning, and enhanced problem-solving

3

AI is increasingly becoming an important part of the professional workplace.



Our Success
as a
District

What is A "generation"?



In MagicSchool, a "generation" refers to a single piece of content the platform creates with AI.

GOAL PER USER
EACH MONTH

22 Generations

LEVITTOWN'S USAGE

51 Generations

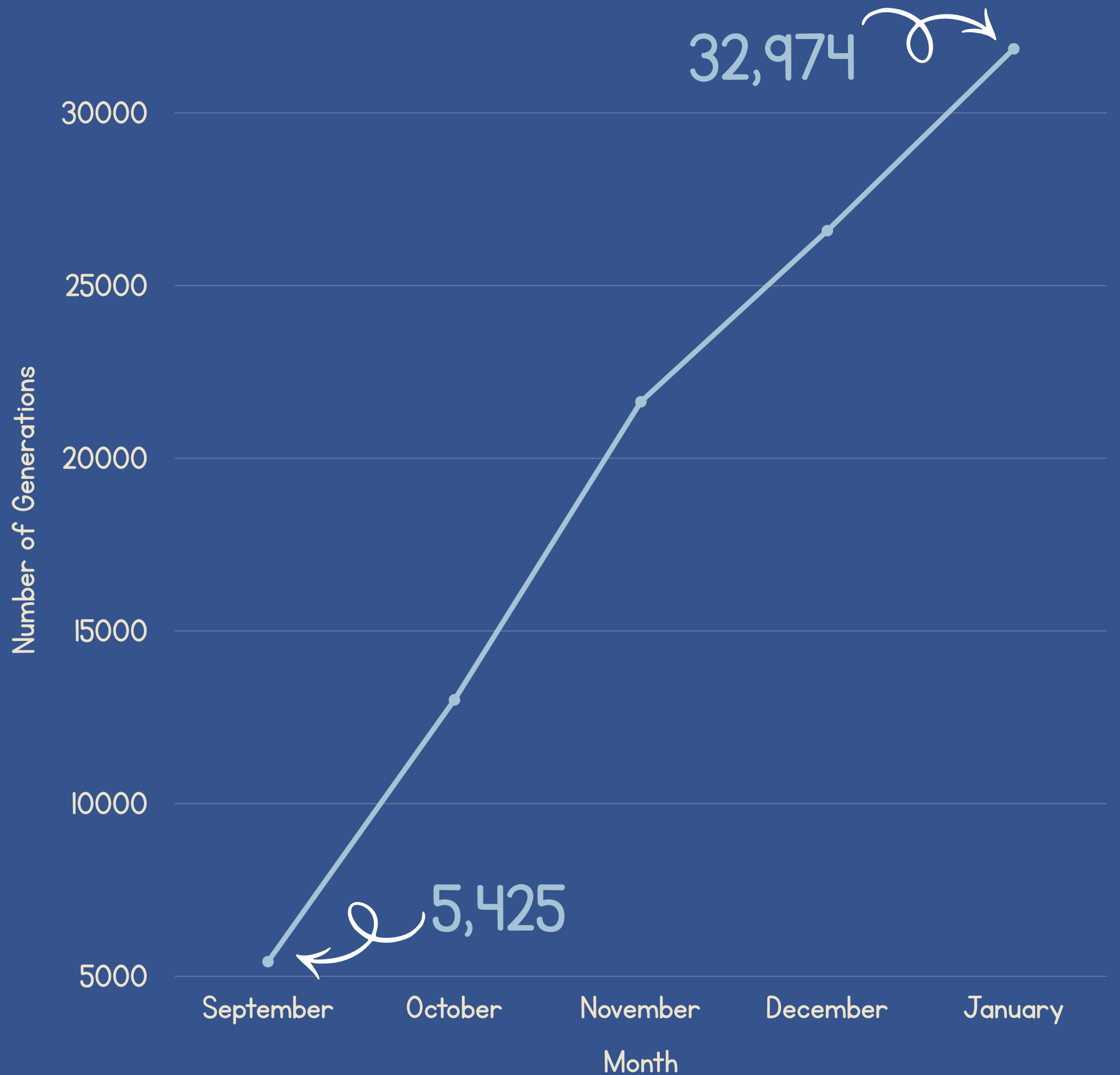
Teacher Usage

GENERATIONS

32,974

TOTAL USERS

617



Student Usage

GENERATIONS

120,130

TOTAL USERS

5,690

